

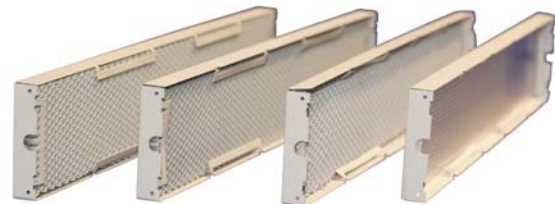
Control Screens and Lenses

	Description	Thickness	One-Lamp	Two-Lamp
<input type="radio"/>	Broad-Field Screen	0.25 in	FIX-T01/CS-BF	FIX-T02/CS-BF
<input type="radio"/>	Medium-Field Screen	0.50 in	FIX-T01/CS-MF	FIX-T02/CS-MF
<input type="radio"/>	Narrow-Field Screen	0.75 in	FIX-T01/CS-NF	FIX-T02/CS-NF
<input type="radio"/>	Prismatic Lens	0.125 in	FIX-T01/LENS	FIX-T02/LENS
<input type="radio"/>	Glare-Reduction Filter	0.060 in	FIX-T01/GR-FILTER	FIX-T02/GR-FILTER

Note: White-finish screen with off-white frame standard; custom-finish screen optional (add -CF suffix to Part Number)



Two-lamp fixture screens



One-lamp fixture screens

Lamp Options and Specifications

	Color Temperature	CRI	Lumens	Life	Part No.
<input type="radio"/>	3000° Kelvin	82	4800	10,000 Hrs	009-55W30K82
<input type="radio"/>	3000° Kelvin	96	3000	10,000 Hrs	009-55W30K96
<input type="radio"/>	3500° Kelvin	82	4800	10,000 Hrs	009-55W35K82
<input type="radio"/>	4100° Kelvin	82	4800	10,000 Hrs	009-55W41K82
<input type="radio"/>	3200° Kelvin Studioline	85	3800	8,000 Hrs	009-55W32KSP
<input type="radio"/>	5600° Kelvin Studioline	85	3800	8,000 Hrs	009-55W56KSP
<input type="radio"/>	3200° Kelvin High Rendering	95	2800	2,000 Hrs	009-55W32KHR
<input type="radio"/>	5600° Kelvin High Rendering	95	2800	2,000 Hrs	009-55W56KHR