

**Control Screens and Lenses**

| Description                                  | Thickness | One-Lamp          | Two-Lamp          |
|--|-----------|-------------------|-------------------|
| <input type="radio"/> Broad-Field Screen     | 0.25 in   | FIX-T01/CS-BF     | FIX-T02/CS-BF     |
| <input type="radio"/> Medium-Field Screen    | 0.50 in   | FIX-T01/CS-MF     | FIX-T02/CS-MF     |
| <input type="radio"/> Narrow-Field Screen    | 0.75 in   | FIX-T01/CS-NF     | FIX-T02/CS-NF     |
| <input type="radio"/> Prismatic Lens         | 0.125 in  | FIX-T01/LENS      | FIX-T02/LENS      |
| <input type="radio"/> Glare-Reduction Filter | 0.060 in  | FIX-T01/GR-FILTER | FIX-T02/GR-FILTER |

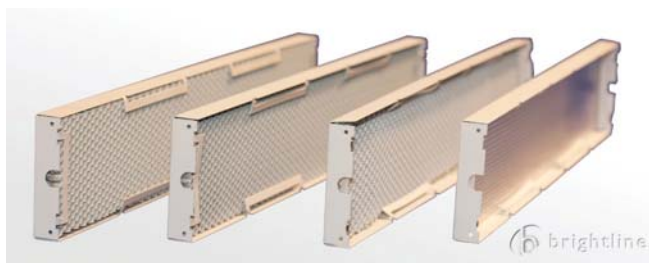
Note: White-finish screen with off-white frame standard; custom-finish screen optional (add -CF suffix to Part Number)



Two-lamp fixture screens



Fixture screens with Glare-Reduction Filter



One-lamp fixture screens

**Lamp Options and Specifications**

| Color Temperature                                 | CRI | Lumens | Life       | Part No.     |
|---|-----|--------|------------|--------------|
| <input type="radio"/> 3000° Kelvin                | 82  | 4800   | 10,000 Hrs | 009-55W30K82 |
| <input type="radio"/> 3000° Kelvin                | 96  | 3000   | 10,000 Hrs | 009-55W30K96 |
| <input type="radio"/> 3500° Kelvin                | 82  | 4800   | 10,000 Hrs | 009-55W35K82 |
| <input type="radio"/> 4100° Kelvin                | 82  | 4800   | 10,000 Hrs | 009-55W41K82 |
| <input type="radio"/> 3200° Kelvin Studioline     | 85  | 3800   | 8,000 Hrs  | 009-55W32KSP |
| <input type="radio"/> 5600° Kelvin Studioline     | 85  | 3800   | 8,000 Hrs  | 009-55W56KSP |
| <input type="radio"/> 3200° Kelvin High Rendering | 95  | 2800   | 2,000 Hrs  | 009-55W32KHR |
| <input type="radio"/> 5600° Kelvin High Rendering | 95  | 2800   | 2,000 Hrs  | 009-55W56KHR |

Note: High-rendering lamps are excellent for HD applications.